



Mews looking south - East end

1311 E Street, SE Washington DC 20003



20 June 2016

ZONING COMMISSION
 District of Columbia
 CASE NO. 15-13
 EXHIBIT NO. 47B3
A. 38

note: internal drains on alleys
and south courtyard

standing seam
metal roof

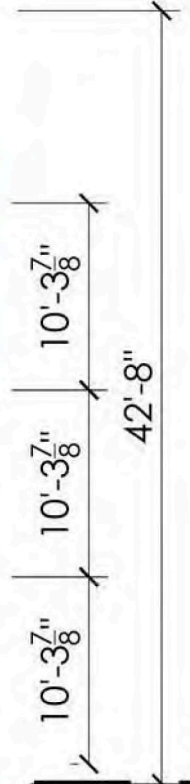
corbelled
brick rake

built-in gutter
along south court,
internal drain

green roof

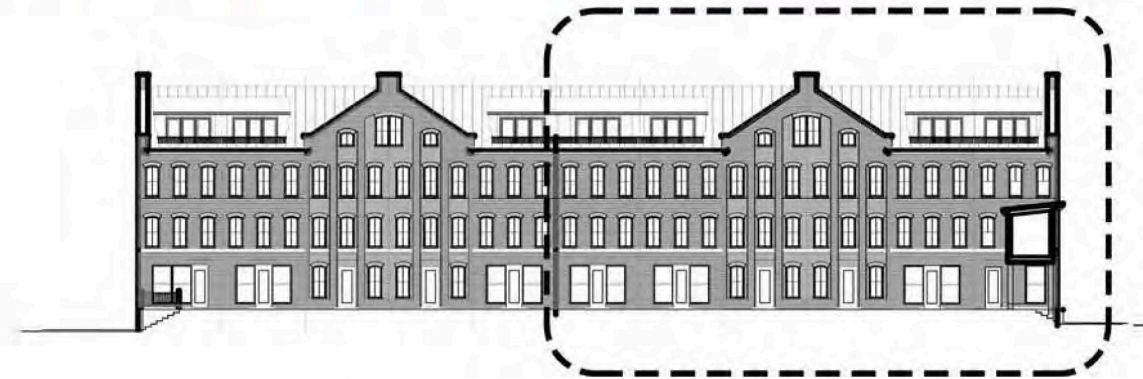
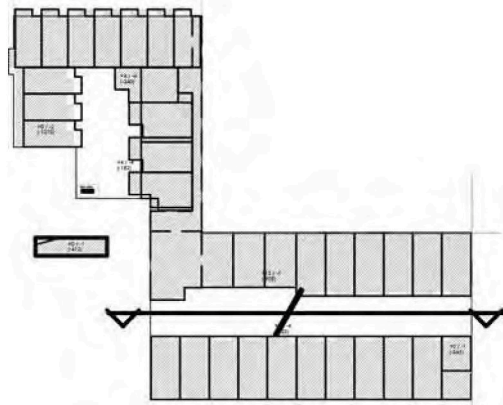
standing seam
metal siding

MATCH
LINE

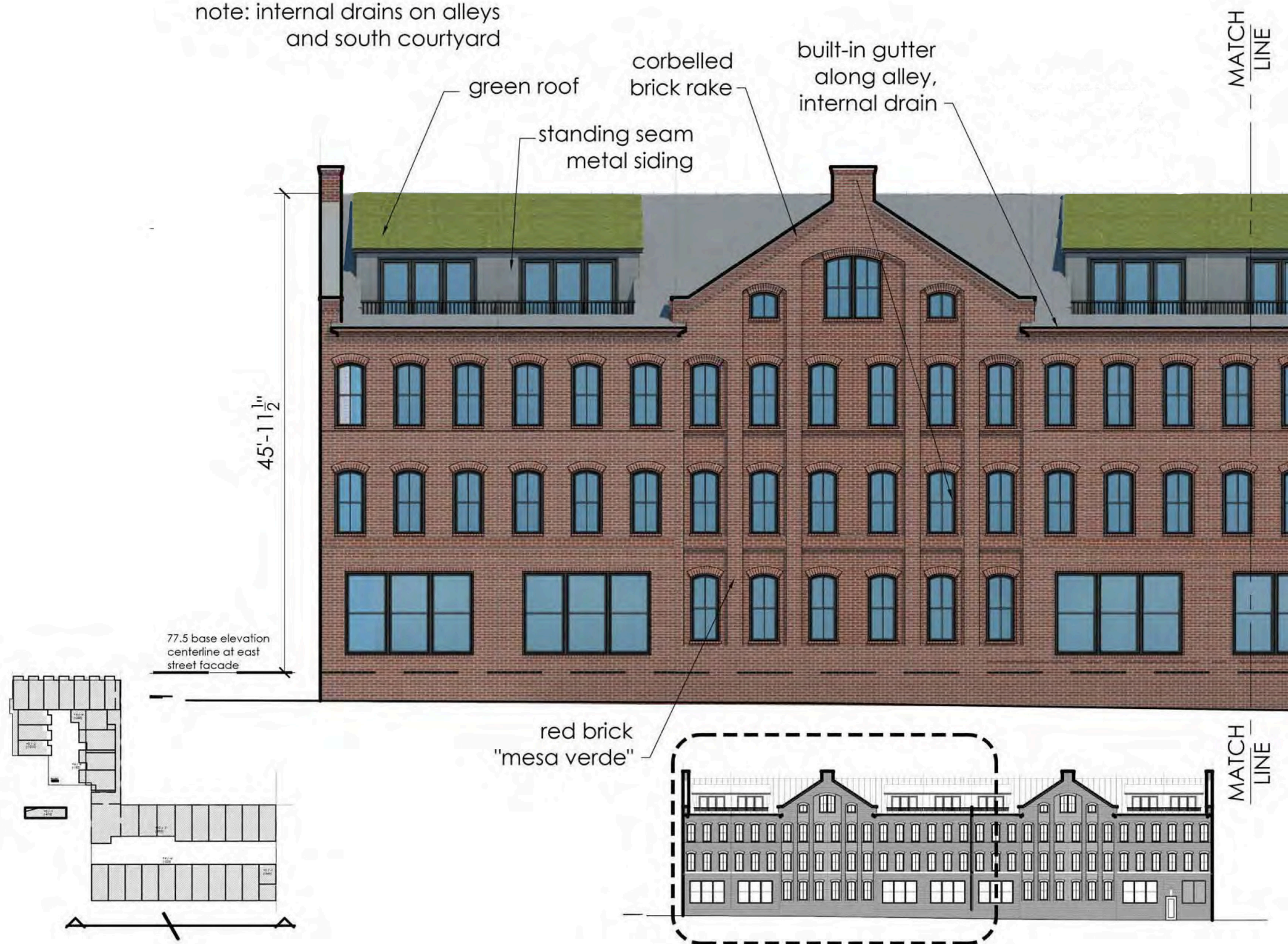


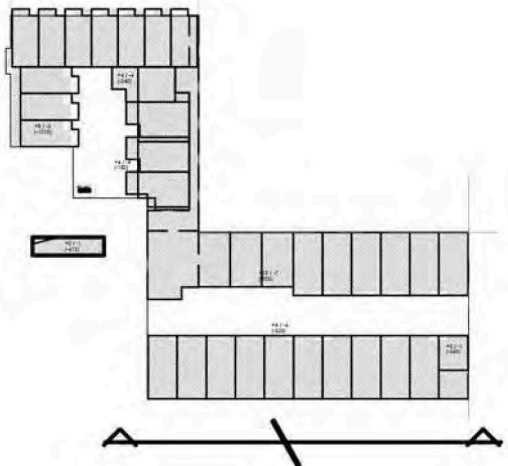
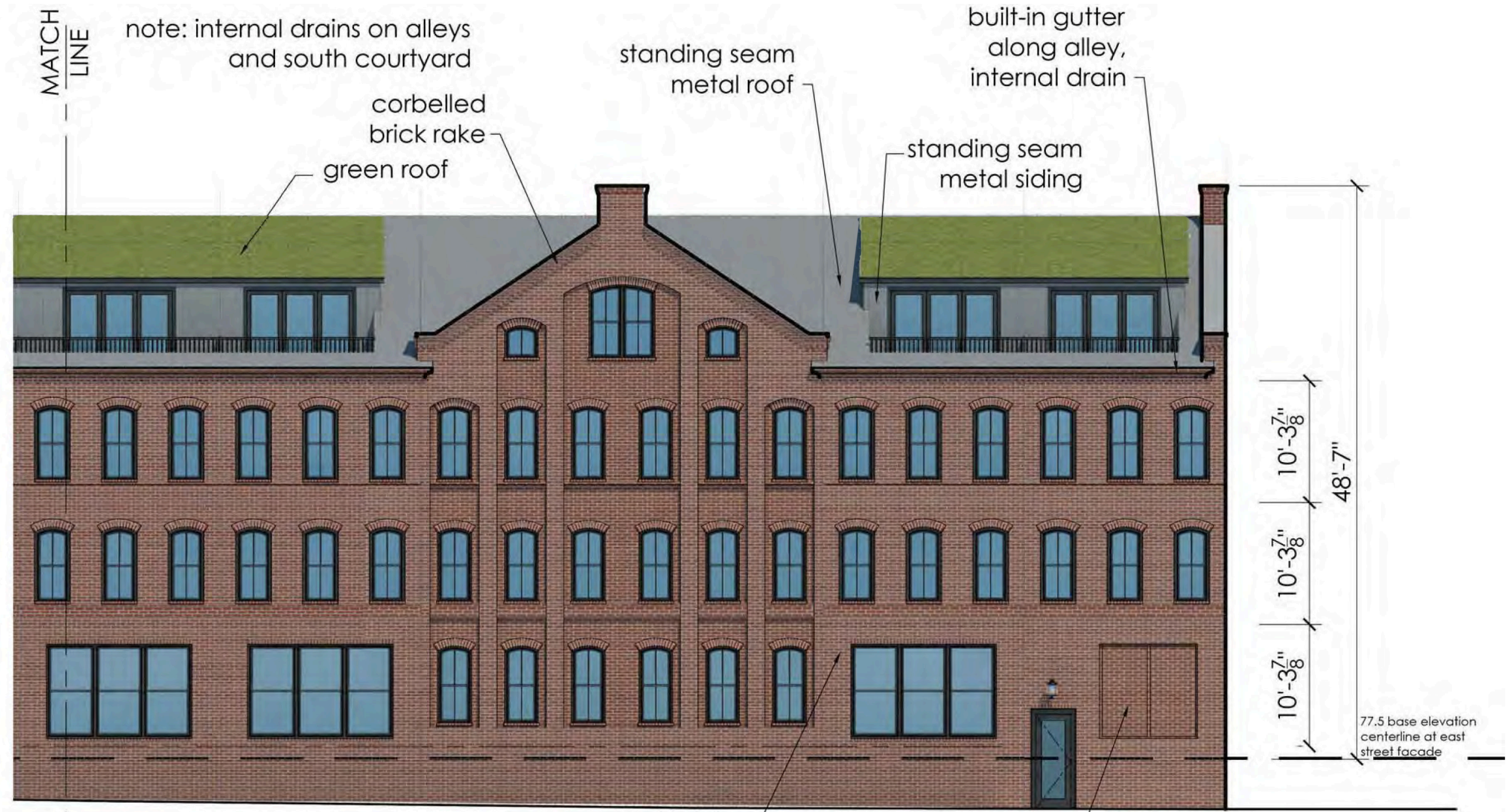
MATCH
LINE

red brick
"mesa verde"



note: internal drains on alleys
and south courtyard





30' Alley elevation - East end

1311 E Street, SE Washington DC 20003



20 June 2016

A . 41